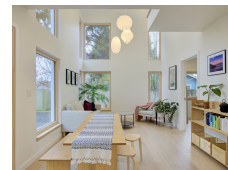




Targa Homes LLC

Low-Carbon Detached ADU | Seattle, WA



PROJECT DATA

- **Layout:** 2 bed, 2.0 bath, 2 fl, 1000 ft²
- **Climate:** 2021 IECC Mixed Marine
- **Category:** Custom

Modeled Performance Data

- **ERI:** with PV 6

TESTIMONIAL

We have found that the home stays a very comfortable temperature even with the large windows and skylights. The fresh air and comfortable temperature have really helped our sleep. ...

We love the house!!

- Homeowner

KEY FEATURES

- All-electric home
- Energy / Heat recovery ventilator
- Heat pump water heater
- High-efficiency variable-speed heat pump
- High-performance wall with continuous insulation
- Photovoltaics
- Raised-heel trusses
- Triple-pane windows
- ACH 50 < 2.5 or CFM50/SF of enclosure ? 0.25

CONTACT

<https://www.targahomes.com>