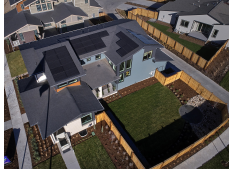




# Thrive Home Builders

Panacea | Denver, CO



## PROJECT DATA

- **Layout:** 5 bed, 4.5 bath, 2 fl, 5142 ft<sup>2</sup>
- **Climate:** 2021 IECC Cold Dry
- **Category:** Production

### Modeled Performance Data

- **ERI:** with PV 8

## KEY FEATURES

- Energy / Heat recovery ventilator
- Photovoltaics
- Battery storage
- Raised-heel trusses
- ACH 50 < 2.5 or CFM50/SF of enclosure ? 0.25
- Double Walls
- Hot Water Recirculation Pump

## TESTIMONIAL

We were coming from a home that was about half the size of this and we are spending a fraction of what we did before on our utilities.

- Homeowners

## CONTACT

(303) 707-4400

<https://www.thrivehomebuilders.com/>