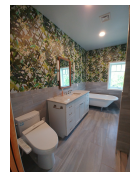




# Zero Net Now

Zero Energy at Albany Post | New Paltz, NY



## PROJECT DATA

- **Layout:** 2 bed, 2.0 bath, 3 fl, 3481 ft<sup>2</sup>
- **Climate:** 2021 IECC Cold Humid
- **Category:** Custom

### Modeled Performance Data

- **ERI:** with PV -16

## TESTIMONIAL

After settling on an ICF building design, it was a very easy step to extend that design to build a net-zero house. We took this extra step hoping that it is good for the environment, provides us with protection against rising energy costs, and encourages further development of energy-efficient housing designs. It is very satisfying to be able to monitor the house's energy usage and see that far more energy is being generated than used.

- Homeowner

## KEY FEATURES

- All-electric home
- Cold-climate heat pump
- Energy / Heat recovery ventilator
- Heat pump water heater
- High-efficiency variable-speed heat pump
- Insulated concrete form (ICF) walls and/or foundation
- Photovoltaics
- Battery storage
- Triple-pane windows
- Unvented insulated attic
- ACH 50 < 2.5 or CFM50/SF of enclosure ? 0.25
- Central Manifold Plumbing Design

## CONTACT

(845) 594-5076

<https://www.zeronetnow.com/>