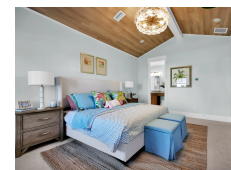




Providence Homes, Inc.

The Alberta at Nocatee | Ponte Verda, FL



PROJECT DATA

- **Layout:** 4 bed, 3.0 bath, 2 fl, 2087 ft²
- **Climate:** 2018 IECC Hot Humid North
- **Category:** Production

Modeled Performance Data

- **ERI:** without PV 49
- **Annual Energy Costs:** without PV \$1,152
- **Annual Energy Cost Savings:** without PV \$950
- **Annual Energy Savings:** without PV 6,720 kWh
- **Savings in the First 30 Years:** without PV \$40,750

TESTIMONIAL

Providence ... built a beautiful, reliable, safe, and healthy home. My 8-year-old son has asthma and it gives us such peace of mind to know Providence's mission is to build healthier, more energy-efficient homes.

- Homeowner

KEY FEATURES

- All-electric home
- Compact (core) plumbing design
- Sensor controls for better indoor air quality
- Unvented insulated attic
- ACH 50 < 2.5 or CFM50/SF of enclosure ? 0.25
- Hot Water Recirculation Pump

CONTACT

(904) 262-9898

<https://www.providencehomesinc.com/>