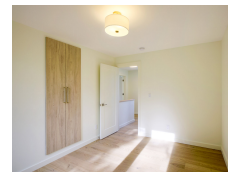




Targa Homes LLC

Seattle Modern ADU | Seattle, WA



PROJECT DATA

- **Layout:** 2 bed, 2.5 bath, 2 fl, 1382 ft²
- **Climate:** 2018 IECC Mixed Marine North
- **Category:** Custom

Modeled Performance Data

- **ERI:** without PV 49
- **Annual Energy Costs:** without PV \$948
- **Annual Energy Cost Savings:** without PV \$800
- **Annual Energy Savings:** without PV 6,120 kWh
- **Savings in the First 30 Years:** without PV \$33,000

TESTIMONIAL

I can confidently say that our new home has improved our overall quality of life. Besides being so much more comfortable and never having to worry about being too hot/too cold, too dry/too humid, we noticed that we are sleeping better and we were not as affected by seasonal allergies this year.

- Homeowners

KEY FEATURES

- All-electric home
- Compact (core) plumbing design
- Energy / Heat recovery ventilator
- Heat pump water heater
- High-performance wall with continuous insulation
- Insulated concrete form (ICF) walls and/or foundation
- Sensor controls for better indoor air quality
- Triple-pane windows
- ACH 50 < 2.5 or CFM50/SF of enclosure ? 0.25

CONTACT

<https://www.targahomes.com>