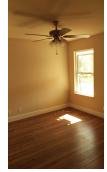




Carl Franklin Homes, L.C.

5th Street Deep Rehab | Lewisville, TX



PROJECT DATA

- **Layout:** 3 bed, 2.0 bath, 1 fl, 1108 ft²
- **Climate:** 2021 IECC Hot Humid
- **Category:** Affordable

Modeled Performance Data

- **ERI:** with PV 58

KEY FEATURES

- All-electric home
- Energy / Heat recovery ventilator
- High-performance wall with continuous insulation
- Triple-pane windows
- Unvented insulated attic
- ACH 50 < 2.5 or CFM50/SF of enclosure ? 0.25

TESTIMONIAL

It's our first home and we love it. Because of the way it's built, we don't have to worry about high utility bills, even in the summer. We just live comfortably year round. Thanks, Green Extreme Homes.
- Homeowners

CONTACT

Steve Brown
9729777398
<http://www.carlfranklinhomes.com/>



U.S. DEPARTMENT
of **ENERGY**

Office of Critical Minerals
and Energy Innovation

For more information on the DOE Efficient New Homes program:
<https://www.energy.gov/eere/buildings/doe-efficient-new-homes-program>