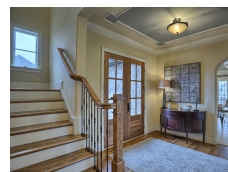




High Performance Homes LLC

Chamberlain Court #75 | Gettysburg, PA



PROJECT DATA

- **Layout:** 4 bed, 4.5 bath, 2 fl, 6869 ft²
- **Climate:** 2021 IECC Cold Humid
- **Category:** Production

Modeled Performance Data

- **ERI:** with PV 23

TESTIMONIAL

We were attracted to the home by the fact that it had a complete high-performance package – high energy efficiency, high water efficiency, air filtration for indoor air quality. We had thought about energy efficiency quite a bit over the years ... but we didn't know of any builders who were building energy-efficient homes. Then we ran across High Performance Homes' displays at the Links. The SIP panels make the home very structurally sound and make a very energy-efficient building envelope for the house. All I've had to pay for is the distribution charges.

- Homeowner in neighborhood

KEY FEATURES

- All-electric home
- Cold-climate heat pump
- Energy / Heat recovery ventilator
- Ground source heat pump
- Photovoltaics
- Structural insulated panel (SIP) walls or walls and roof
- Unvented insulated attic
- ACH 50 < 2.5 or CFM50/SF of enclosure ? 0.25
- Hot Water Recirculation Pump

CONTACT

Kiere DeGrandchamp
7173594663