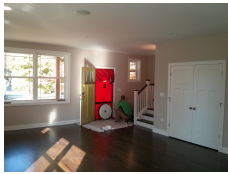




BrightLeaf Homes LLC

McCormick Avenue | Brookfield, IL



PROJECT DATA

- **Layout:** 4 bed, 3.0 bath, 2 fl, 2880 ft²
- **Climate:** 2021 IECC Cold Humid
- **Category:** Production

Modeled Performance Data

- **ERI:** with PV 38

TESTIMONIAL

The difference between here and the house we were renting in the city is amazing. Everything is cozy and quiet. There aren't any weird smells, and of course, we love the LED everything. I know we have all of these certifications but there really isn't an understanding of what they do for the general quality of life until you live in the home.

- Homeowner

KEY FEATURES

- Electric Vehicle Charger Installed or Wired for Charger
- Photovoltaics
- Triple-pane windows
- ACH 50 < 2.5 or CFM50/SF of enclosure ? 0.25
- Staggered Stud Walls

CONTACT

Scott Sanders
6304745323

<https://www.mybrightleafhome.com/>



U.S. DEPARTMENT
of **ENERGY**

Office of Critical Minerals
and Energy Innovation

For more information on the DOE Efficient New Homes program:

<https://www.energy.gov/eere/buildings/doe-efficient-new-homes-program>