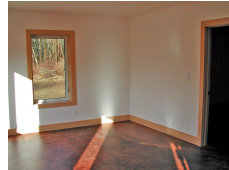




Revival Homes L.L.C.

Perkins Road House | New Hartford, CT



PROJECT DATA

- **Layout:** 3 bed, 2.0 bath, 2 fl, 1379 ft²
- **Climate:** 2021 IECC Cold Humid
- **Category:** Affordable

Modeled Performance Data

- **ERI:** with PV -12

TESTIMONIAL

It was an opportunity to make an extremely high-performance energy-efficient home and do it on a modest budget that most people can afford.

- Dave Jones, builder, Revival Homes

KEY FEATURES

- All-electric home
- Cold-climate heat pump
- Electric Vehicle Charger Installed or Wired for Charger
- Heat pump water heater
- High-performance wall with continuous insulation
- Photovoltaics
- Triple-pane windows
- Unvented insulated attic
- ACH 50 < 2.5 or CFM50/SF of enclosure ? 0.25
- Hot Water Recirculation Pump

CONTACT

David Jones
8603071794
<https://www.revivalhomes.net/>



U.S. DEPARTMENT
of **ENERGY**

Office of Critical Minerals
and Energy Innovation

For more information on the DOE Efficient New Homes program:
<https://www.energy.gov/eere/buildings/doe-efficient-new-homes-program>