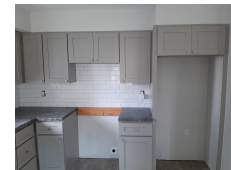




United Way of Long Island

Project Endurance | Wyandanch, NY



PROJECT DATA

- **Layout:** 3 bed, 2.0 bath, 1 fl, 1275 ft²
- **Climate:** 2021 IECC Mixed Humid
- **Category:** Affordable

Modeled Performance Data

- **ERI:** with PV -29

TESTIMONIAL

The magnesium-oxide structural insulated panels (SIPs) represent the best SIP wall assembly with the greatest R-value per inch I've found in the United States. The rolled galvanized steel frame has spray polyurethane injected between two skins of magnesium oxide, yielding R-40 for a 7-inch-thick wall. The wall assembly is vapor-closed, waterproof, sound deadening, and more fire resistant than other SIPs.

- United Way of Long Island

KEY FEATURES

- All-electric home
- Energy / Heat recovery ventilator
- Electric Vehicle Charger Installed or Wired for Charger
- Heat pump water heater
- Photovoltaics
- Raised-heel trusses
- Structural insulated panel (SIP) walls or walls and roof
- Unvented insulated attic
- ACH 50 < 2.5 or CFM50/SF of enclosure ? 0.25
- Central Manifold Plumbing Design

CONTACT

Rick Wertheim
6319403700
<https://www.unitedwayli.org/>