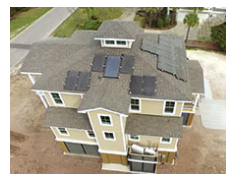




Insulsteel

Regimental Lane | Charleston, SC



PROJECT DATA

- **Layout:** 4 bed, 4.0 bath, 2 fl, 2967 ft²
- **Climate:** 2021 IECC Hot Humid
- **Category:** Custom

Modeled Performance Data

- **ERI:** with PV 16

TESTIMONIAL

It's about extreme energy efficiency and air quality. ... We have homes that are 3,000 square feet that have \$15 or \$20 electric bills. That's the bottom line, to get lower energy costs and just avoid waste.

- Steve Bostic, co-founder, Insulsteel Building Enclosures, LLC

KEY FEATURES

- All-electric home
- Compact (core) plumbing design
- High-efficiency variable-speed heat pump
- High-performance wall with continuous insulation
- Photovoltaics
- Battery storage
- Unvented insulated attic
- ACH 50 < 2.5 or CFM50/SF of enclosure ? 0.25

CONTACT

Tina Bostic
8433522370