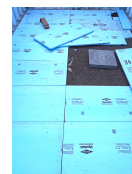




Habitat for Humanity North Central Connecticut

Roosevelt Zero Energy Home | Hartford, CT



PROJECT DATA

- **Layout:** 3 bed, 1.5 bath, 2 fl, 1280 ft²
- **Climate:** 2021 IECC Cold Humid
- **Category:** Affordable

Modeled Performance Data

- **ERI:** with PV -7

TESTIMONIAL

It's been an amazing journey working with everyone and Habitat. It was actually perfect to start a family here, to become a homeowner and have a positive environment for our kids.
- Homeowner

KEY FEATURES

- All-electric home
- Cold-climate heat pump
- Compact (core) plumbing design
- Energy / Heat recovery ventilator
- Heat pump water heater
- Photovoltaics
- Triple-pane windows
- ACH 50 < 2.5 or CFM50/SF of enclosure ? 0.25

CONTACT

8605412208
<https://hfhnc.org/>