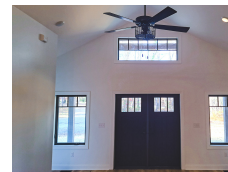




# S. D. Jessup Construction, Inc

Shacktown | Yadkinville, NC



## PROJECT DATA

- **Layout:** 3 bed, 3.0 bath, 1 fl, 3147 ft<sup>2</sup>
- **Climate:** 2015 IECC Mixed Humid North
- **Category:** Custom

### Modeled Performance Data

- **ERI:** without PV 37
- **Annual Energy Costs:** without PV \$900
- **Annual Energy Cost Savings:** without PV \$1,600
- **Annual Energy Savings:** without PV 13,130 kWh
- **Savings in the First 30 Years:** without PV \$66,750

## KEY FEATURES

- All-electric home
- Compact (core) plumbing design
- Heat pump water heater
- High-efficiency variable-speed heat pump
- High-performance wall with continuous insulation
- Sensor controls for better indoor air quality
- Triple-pane windows
- ACH 50 < 2.5 or CFM50/SF of enclosure ? 0.25

## CONTACT

(336) 368-1155  
<http://www.sdjessup.com>

## TESTIMONIAL

The main thing we wanted was energy efficiency and low energy costs. So the efficiency and how well insulated the home is were important. We also thought about health and comfort. In our previous house the HVAC was in the attic. That caused a lot of problems with health and sinuses because of the dust in the air from the attic.

- Homeowner