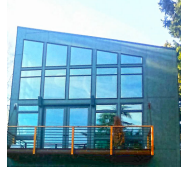




# TC Legend Homes LLC

22nd Avenue | Seattle, WA



## PROJECT DATA

- **Layout:** 5 bed, 3.5 bath, 3 fl, 4472 ft<sup>2</sup>
- **Climate:** 2021 IECC Mixed Marine
- **Category:** Custom

### Modeled Performance Data

- **ERI:** with PV 39

## TESTIMONIAL

The tall, narrow house design takes advantage of its ... sloped urban infill lot [with] a light-filled great room with large, south-facing windows. ... This home incorporates a heat pump, and energy-efficient appliances were used throughout. By conserving as much energy as possible, this home will be able to offset 100% or more of its usage with a roof-sized solar electric system.

- Ted Clifton, builder, TC Legend Homes

## KEY FEATURES

- Air-to-water heat pump
- All-electric home
- Electric Vehicle Charger Installed or Wired for Charger
- Heat pump water heater
- High-efficiency variable-speed heat pump
- Insulated concrete form (ICF) walls and/or foundation
- Structural insulated panel (SIP) walls or walls and roof
- Triple-pane windows
- Unvented insulated attic
- ACH 50 < 2.5 or CFM50/SF of enclosure ? 0.25

## CONTACT

2134198226

<https://tclegendhomes.com/>