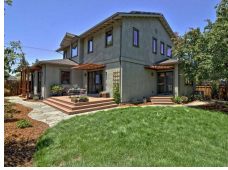
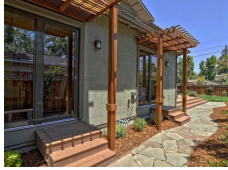




One Sky Homes

Cottle Zero Net Energy Home | San Jose, CA



PROJECT DATA

- **Layout:** 5 bed, 3.5 bath, 2 fl, 3198 ft²
- **Climate:** 2021 IECC Marine
- **Category:** Custom

Modeled Performance Data

- **ERI:** with PV -1

TESTIMONIAL

What jumped out initially more than anything was the comfort level of the house. It was comfortable as soon as we walked in.

- Homeowners Bill and Michelle

KEY FEATURES

- All-electric home
- Energy / Heat recovery ventilator
- Electric Vehicle Charger Installed or Wired for Charger
- High-performance wall with continuous insulation
- Insulated concrete form (ICF) walls and/or foundation
- Photovoltaics
- Raised-heel trusses
- Triple-pane windows
- ACH 50 < 2.5 or CFM50/SF of enclosure ? 0.25
- Hot Water Recirculation Pump

CONTACT

Allen Gilliland
4083357515