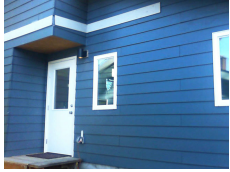




TC Legend Homes LLC

Howell Street | Seattle, WA



PROJECT DATA

- **Layout:** 1 bed, 1.0 bath, 1 fl, 788 ft²
- **Climate:** 2021 IECC Mixed Marine
- **Category:** Custom

Modeled Performance Data

- **ERI:** with PV 59

TESTIMONIAL

Our houses are designed from the ground up to take advantage of the sun. A passive solar layout ... means lots of windows facing south and few facing north. The long axis of the house is east to west to allow for maximized solar exposure for a future PV system and for passive solar heating.

- Ted Clifton, builder, TC Legend Homes

KEY FEATURES

- All-electric home
- Cold-climate heat pump
- Compact (core) plumbing design
- High-efficiency variable-speed heat pump
- Insulated concrete form (ICF) walls and/or foundation
- Structural insulated panel (SIP) walls or walls and roof
- Triple-pane windows
- Unvented insulated attic
- ACH 50 < 2.5 or CFM50/SF of enclosure ? 0.25

CONTACT

2134198226

<https://tclegendhomes.com/>