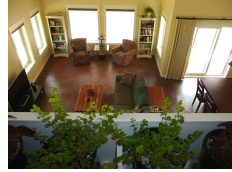




CVH Inc. DBA Clifton View Homes

Snohomish Farmhouse | Snohomish, WA



PROJECT DATA

- **Layout:** 2 bed, 2.0 bath, 2 fl, 2417 ft²
- **Climate:** 2021 IECC Mixed Marine
- **Category:** Custom

Modeled Performance Data

- **ERI:** with PV -9

TESTIMONIAL

It is important to let you know we love this house! Design, construction, project management, and quality. It is very livable.

- Homeowners

KEY FEATURES

- All-electric home
- Compact (core) plumbing design
- Electric Vehicle Charger Installed or Wired for Charger
- Ground source heat pump
- Heat pump water heater
- Photovoltaics
- Structural insulated panel (SIP) walls or walls and roof
- Triple-pane windows
- Unvented insulated attic
- ACH 50 < 2.5 or CFM50/SF of enclosure ? 0.25

CONTACT

3606787000