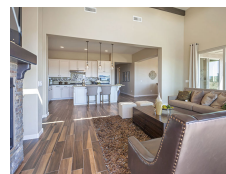




Mandalay Homes

The Dells at Cathedral Point | Prescott, AZ



PROJECT DATA

- **Layout:** 3 bed, 3.0 bath, 1 fl, 2207 ft²
- **Climate:** 2021 IECC Mixed Dry
- **Category:** Production

Modeled Performance Data

- **ERI:** with PV -2

TESTIMONIAL

The greatest reward would have to be pride in what we have chosen to do. We transitioned to 100% DOE ZERH in 2013. We will start between 120 and 150 new homes in 2016. Everything we build will be a DOE ZERH-compliant home. Anyone not moving toward this program is behind the curve.

- Geoff Ferrell, manager of construction and energy efficiency, Mandalay Homes

KEY FEATURES

- Energy / Heat recovery ventilator
- High-performance wall with continuous insulation
- Raised-heel trusses
- Unvented insulated attic
- ACH 50 < 2.5 or CFM50/SF of enclosure ? 0.25
- Central Manifold Plumbing Design

CONTACT

(602) 492-5566

<https://www.mandalayhomes.com/>