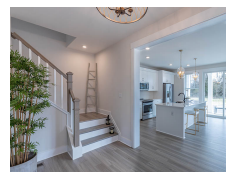




# Healthy Communities

Walnut Farm | Williamsburg, VA



## PROJECT DATA

- **Layout:** 3 bed, 2.5 bath, 2 fl, 2227 ft<sup>2</sup>
- **Climate:** 2021 IECC Mixed Humid
- **Category:** Production

### Modeled Performance Data

- **ERI:** with PV 9

## TESTIMONIAL

The finished product is a house that is grid-connected, solar-powered, energy-efficient, easy to maintain, and visually stunning.  
- Homeowner

## KEY FEATURES

- All-electric home
- Cold-climate heat pump
- Energy / Heat recovery ventilator
- Electric Vehicle Charger Installed or Wired for Charger
- Heat pump water heater
- High-performance wall with continuous insulation
- Photovoltaics
- ACH 50 < 2.5 or CFM50/SF of enclosure ? 0.25

## CONTACT

(757) 592-4855  
<https://healthycommunitiesva.com/>