



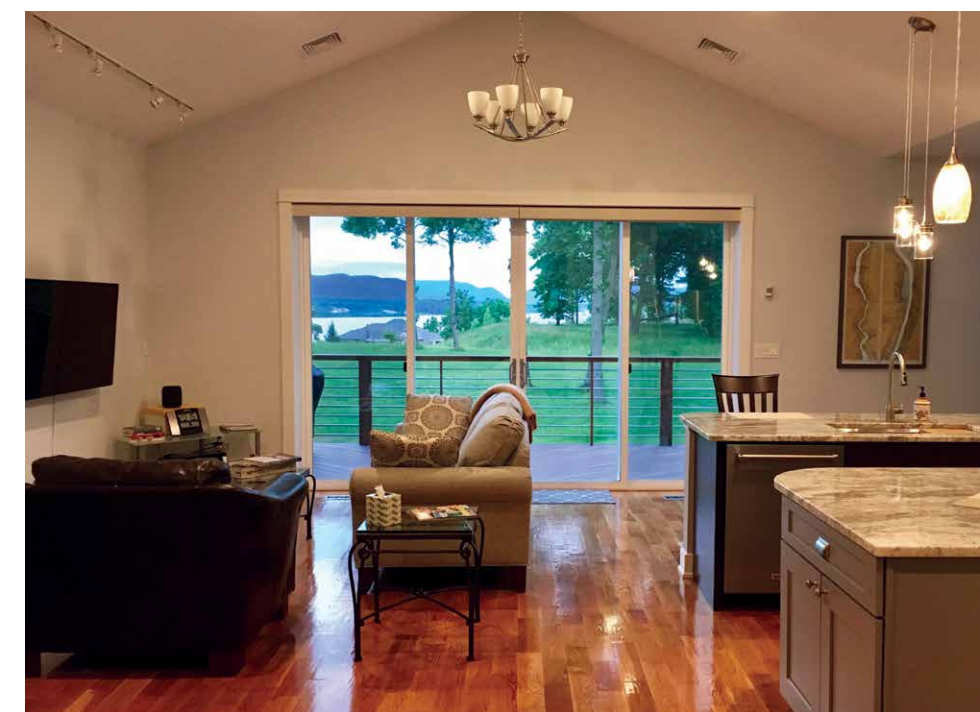
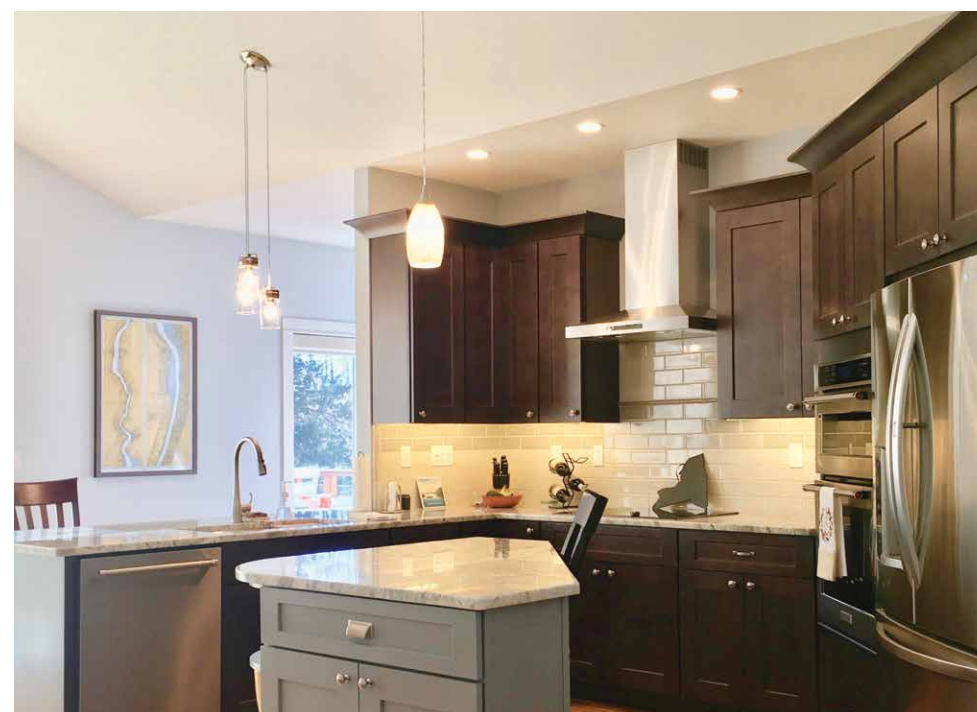
Greenhill Contracting

Newburgh Custom | Newburgh, NY | ZeroNetNow.com



Photos courtesy of Greenhill Contracting

"After just a short while living in a high-performance home, I can't imagine living anywhere else." Home owner



PROJECT DATA

- **Layout:** 3 bdrm, 3 bath, 1 fl + bsmt, 2,512 ft²
- **Climate:** IECC 5A, cold
- **Completed:** July 2019
- **Category:** custom for buyer

MODELED PERFORMANCE DATA

- **HERS Index:** without 39; with PV -5
- **Annual Energy Costs:** without PV \$1800; with PV \$100
- **Annual Energy Cost Savings:** (vs typical new homes) without PV \$2,200; with PV \$3,950
- **Annual Energy Savings:** without PV 14,700 kWh; with PV 26,200 kWh
- **Savings in the First 30 Years:** \$167,200

CONTACT

Anthony Aebi
845-594-5076
greenhillcontracting@yahoo.com

KEY FEATURES

- **Walls:** ICF, R-22 total: 1/2" drywall; 11.25" ICF blocks, vinyl siding.
- **Roof:** Gable roof; 3/4" T&G OSB, self-adhered membrane at valleys and roof edges; underlayment; 130 mph rated asphalt shingles, lifetime warranty.
- **Attic:** Unvented attic; R-65 total, 10.5" R-46 open-cell spray foam plus 2.5" R-19 closed-cell spray foam on underside of roof deck; 16" raised heel trusses.
- **Foundation:** R-22 ICF basement walls clad with cementitious boards waterproofed with tar; 4.5" R-29 closed-cell spray foam under slab.
- **Windows:** Triple-pane, argon-filled, low-e, vinyl casement frames, U=0.18, SHGC=0.23; triple-pane sliding doors, U=0.20, SHGC=0.28.
- **Air Sealing:** 0.18 ACH 50.
- **Ventilation:** ERV with continuous 20 cfm draw from baths and 40 cfm from kitchen plus boost settings; CO₂ sensor also controls boost setting; MERV 7 & 8 filters.
- **HVAC:** Ducted mini-split heat pump, 9.8 HSPF, 16 SEER, 2 air handlers, ducts inside.
- **Hot Water:** Heat pump water heater, EF 3.53, 50-gal.; central manifold plumbing with PEX.
- **Lighting:** 100% LED, motion sensors.
- **Appliances:** ENERGY STAR refrigerator, clothes washer, dishwasher, heat pump clothes dryer.
- **Solar:** 10.2-kW PV.
- **Water Conservation:** WaterSense-labeled fixtures, drought-resistant landscaping.
- **Energy Management System:** Programmable thermostat.
- **Other:** Wide doors and hallways, zero-VOC paint, low-VOC KCMA cabinets; hurricane clips, disaster-resistant features.

