



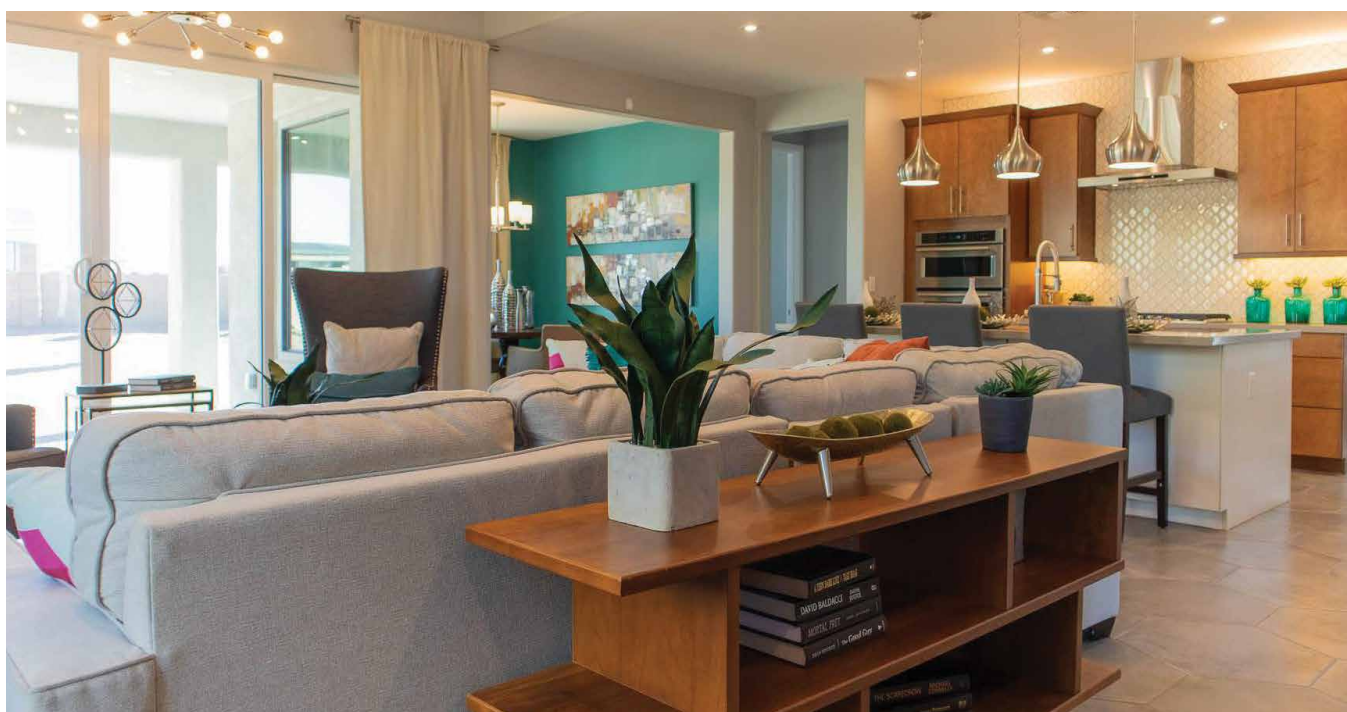
# Mandalay Homes

Foothills at the Dells | Prescott, AZ | MandalayHomes.com



Photos courtesy of Mandalay Homes

“The home is everything the buyer wants or needs and more.” Mandalay Homes



## PROJECT DATA

- **Layout:** 2 bdrm, 2 bath, 1 fl, 1,648 ft<sup>2</sup>
- **Climate:** IECC 4B, mixed-dry
- **Completed:** May 2019
- **Category:** production

### MODELED PERFORMANCE DATA

- **HERS Index:** without PV 55; with PV 37
- **Annual Energy Costs:** without PV \$1,170; with PV \$500
- **Annual Energy Cost Savings:** (vs typical new homes) without PV \$550; with PV \$1,250
- **Annual Energy Savings:** without PV 4,100 kWh; with PV 10,400 kWh
- **Savings in the First 30 Years:** \$52,900

## CONTACT

Geoff Ferrell  
928-710-5915  
Geoff@MandalayHomes.com

## KEY FEATURES

- **Walls:** 2x6 24" o.c. advanced framing, R-19 total: open-cell spray foam in stud bays, 1" EPS foam, taped house wrap; stucco.
- **Roof:** Shed roof, architectural shingles or tiles; no penetrations or vents.
- **Attic:** Unvented vaulted ceilings, 7.5" R-25 spray foam.
- **Foundation:** Post-tensioned slab on grade, poured concrete; 1.5" 3-lb closed-cell spray foam on slab edge.
- **Windows:** Double-pane, argon-filled, low-e2, vinyl sliding frames, U=0.28, SHGC=0.22.
- **Air Sealing:** 0.7 ACH 50, AeroBarrier sealing system.
- **Ventilation:** ERV, continuous ventilation, MERV 13 filters; bath fans with humidity sensors and timers; MERV 6 filters on ERV.
- **HVAC:** Central air-source heat pump variable ECM controlled motor, 9.6 HSPF, 17 SEER.
- **Hot Water:** Heat pump water heater, 3.42 EF, 50-gal.; PEX piping, smart recirculation pump.
- **Lighting:** 100% LED, motion sensors.
- **Appliances:** ENERGY STAR dishwasher, exhaust fans, ERV, lighting, and water heater.
- **Solar:** 1.89-kW PV system, 10-kWh battery.
- **Water Conservation:** WaterSense-labeled fixtures and toilets, smart irrigation, passive collection and distribution of rainwater.
- **Energy Management System:** Smart climate controls, integrated ventilation controls. Energy control software/hardware uses PV not grid power during evening peak.
- **Other:** All low-to-no-VOC products, recycled content materials.

