



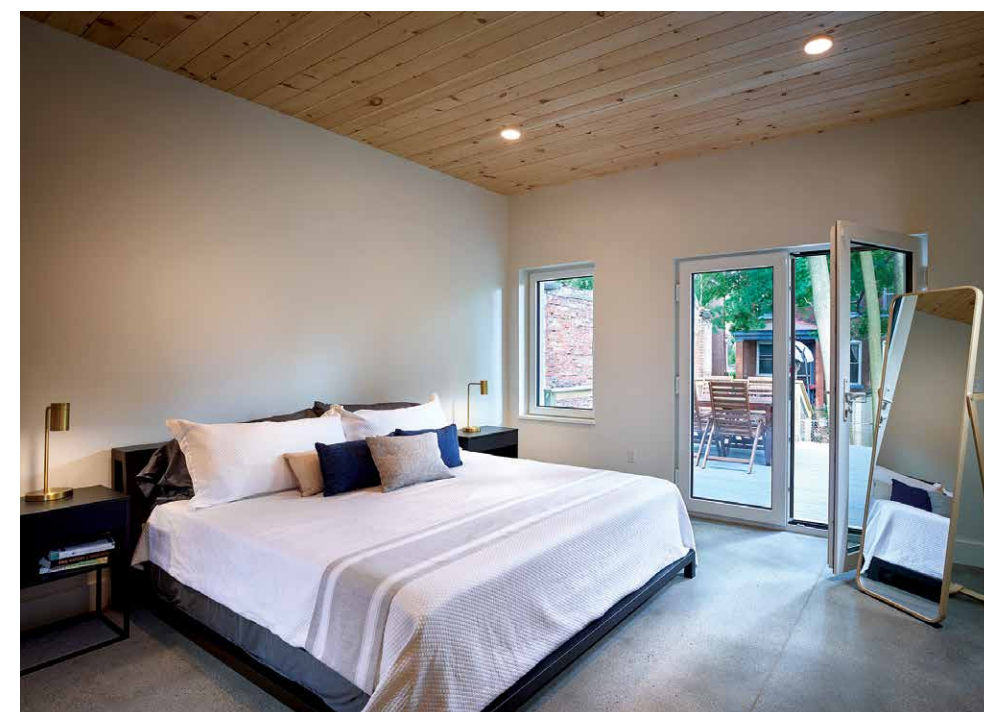
# Module Design Inc.

Pittsburgh Panel House | Pittsburgh, PA | ModuleHousing.com



Photos courtesy of Module Design

“The ZERH program is both affordable and aligns perfectly with what our customers want.” *Module Design*



## PROJECT DATA

- **Layout:** 1 bdrm, 1 bath, 1 fl, 880 ft<sup>2</sup>
- **Climate:** IECC 5A, cold
- **Completed:** May 2019
- **Category:** custom for buyer

### MODELED PERFORMANCE DATA

- **HERS Index:** without PV 42
- **Annual Energy Costs:** without PV \$950
- **Annual Energy Cost Savings:** (vs typical new homes) without PV \$850
- **Annual Energy Savings:** without PV 6,300 kWh
- **Savings in the First 30 Years:** \$36,150

## CONTACT

Brian Gaudio  
412-726-7634  
brian@modulehousing.com

## KEY FEATURES

- **Walls:** Factory-built wall panels, R-35 total: 9.5" I-joists at 24" o.c. dense-packed with cellulose; 7/16" coated OSB sheathing, rain screen, fiber cement panels.
- **Roof:** Flat roof, 5/8" drywall, 7/16" coated OSB sheathing, 14" I-Joists at 24" o.c.; 5.5" tapered poly-iso rigid foam, 90-mil EPDM roof membrane.
- **Attic:** Unvented hot roof, 14" R-51 blown cellulose in joist cavities, 5.5" R-31 tapered poly-iso rigid foam above roof sheathing.
- **Foundation:** Slab on grade; stem wall: 4" EPS rigid foam, 10" CMU with filled cores, damp proofing, 3" EPS rigid foam, cementitious parging; 6" EPS rigid foam under slab.
- **Windows:** Triple-pane, argon-filled, low-e3, uPVC and fiberglass casement frames, U=0.13, SHGC=0.56.
- **Air Sealing:** 2.5 ACH 50. All sill plates and panel joints gasketed.
- **Ventilation:** ERV with integrated timer, MERV 8 filter.
- **HVAC:** Ductless mini-split heat pump, 17 SEER, 2 indoor units, 1 outdoor compressor.
- **Hot Water:** Heat pump water heater, 3.55 UEF, 45-gal.; compact distribution.
- **Lighting:** 95% LED, integrated smart lighting controls, daylighting.
- **Appliances:** ENERGY STAR refrigerator, dishwasher, and clothes washer.
- **Solar:** Solar ready.
- **Water Conservation:** EPA WaterSense fixtures and toilets.
- **Energy Management System:** Programmable thermostat, smart lighting controls.
- **Other:** Handicapped accessible doors, halls, bathrooms; no/low-VOC paints, cabinets.

