

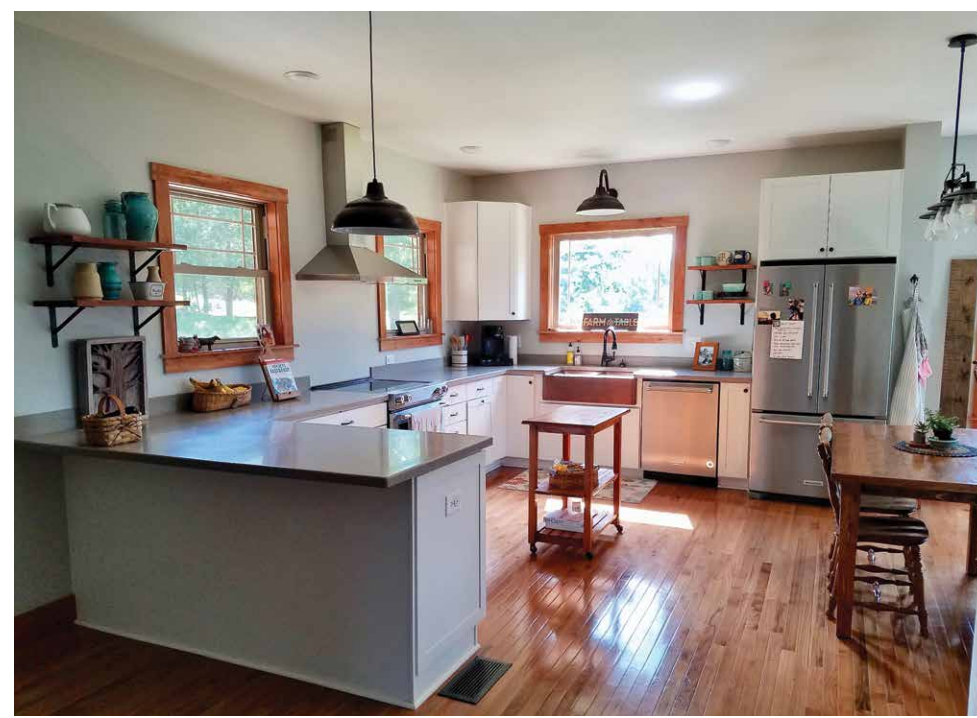
# S. D. Jessup Construction

Pipers Creek | Ararat, NC | [www.SDJessup.com](http://www.SDJessup.com)



Photos courtesy of SD Jessup Construction

"I'm building... homes that actually work right and owners enjoy living in." *Shawn Jessup, S. D.*



## PROJECT DATA

- **Layout:** 3 bdrm, 2.5 bath, 2 fls, 3,310 ft<sup>2</sup>
- **Climate:** IECC 4A, mixed-humid
- **Completed:** November 2018
- **Category:** custom buyer

### MODELED PERFORMANCE DATA

- **HERS Index:** without PV 42
- **Annual Energy Costs:** without PV \$1,650
- **Annual Energy Cost Savings:** (vs typical new homes) without PV \$1,550
- **Annual Energy Savings:** without PV 12,800 kWh
- **Savings in the First 30 Years:** \$65,200

## CONTACT

Shawn Jessup  
336-368-1155  
[Shawn@SDJessup.com](mailto:Shawn@SDJessup.com)

## KEY FEATURES

- **Walls:** 2x4 16" o.c. advanced framing; R-21 total: ½" drywall; 1st floor 2x4 16" o.c. with R-15 fiberglass batts, 2nd floor 2x6 16" o.c. with R-19 fiberglass batts; R-6.6 poly isocyanurate rigid foam taped at seams and continuous roof to foundation;; self-draining vinyl siding.
- **Roof:** Gable roof; ¾" taped coated OSB sheathing, asphalt shingles, 2-ft overhangs.
- **Attic:** Unvented, R-50 open-cell spray foam, 15" raised energy heel trusses.
- **Foundation:** Insulated basement, R-31.5 total; pre-cast concrete walls panels with insulated concrete studs, 2.5" R-12.5 XPS foam plus R-19 fiberglass, asphalt water proofing.
- **Windows:** Double-pane, argon-filled, low-e, vinyl double-hung frames, U=0.30, SHGC=0.25.
- **Air Sealing:** 0.37 ACH 50.
- **Ventilation:** ERV with MERV 8 filter, indoor air quality sensors, MERV 13 filter on HVAC.
- **HVAC:** Central air-source heat pump, 9.5 HSPF, 18.5 SEER; rigid metal ducts in conditioned space. Sealed direct-vent propane fireplace.
- **Hot Water:** Heat pump water heater, 3.55 EF, 50-gal.; electric tank backup; compact plumbing with PEX piping.
- **Lighting:** 100% LED, motion sensors, daylighting.
- **Appliances:** ENERGY STAR refrigerator, dishwasher, ceiling fans, and exhaust fans.
- **Solar:** Solar ready.
- **Water Conservation:** EPA WaterSense fixtures and toilets.
- **Energy Management System:** Smart, internet-enabled thermostats, indoor air monitor.
- **Other:** Wide doors and hallways, low-to-no-VOC products, CARB ATCM/TSCA cabinets.

