



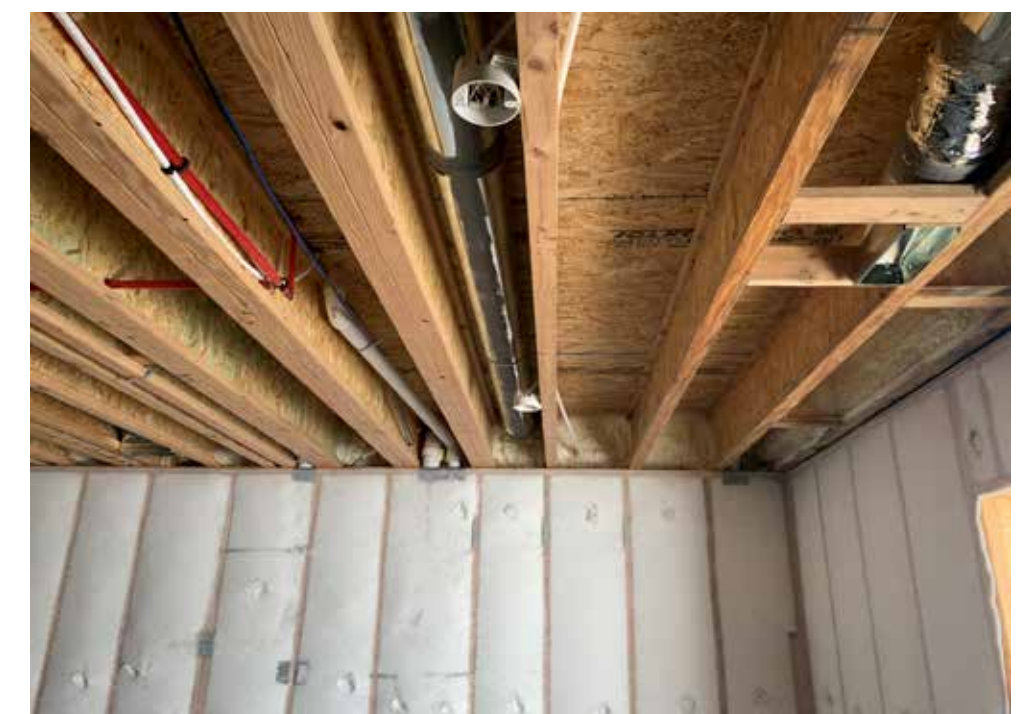
Garbett Construction

Eclipse Passive House | Park City, UT | GarbettHomes.com



Photos courtesy of Garbett Construction

“Our standard DOE Zero Energy Ready Home is at the heart of our Silver Creek Village Passive House.” *Garbett Homes*



PROJECT DATA

- **Layout:** 4 bdrm, 4 bath, 2 fls + bsmt, 2,609 ft²
- **Climate:** IECC 6B, cold
- **Completed:** June 2023
- **Category:** Custom Spec

MODELED PERFORMANCE DATA

- **HERS Index:** without PV 33
- **Annual Energy Costs:** without PV \$400
- **Annual Energy Cost Savings:** (vs typical new homes) without PV \$1,290
- **Annual Energy Savings:** without PV 12,260 kWh, 369 therms
- **Savings in the First 30 Years:** without PV \$53,850

CONTACT

Damian Mora, Bryson C. Garbett
 801-396-9800
 damian@garbetthomes.com
 brysonc@garbetthomes.com

KEY FEATURES

- **Walls:** Panelized, 2x6 24" o.c., R-43 total: advance framed, 5.5" (R-23.1) blown fiberglass insulation; 7/16" OSB sheathing; synthetic house wrap, 4" (R-20) XPS; 3-coat stucco.
- **Roof:** Gabled truss roof, 7/16" OSB sheathing; #15 roof felt, asphalt shingles.
- **Attic:** Vented, R-60 total: 16" blown fiberglass, 12" raised heel trusses.
- **Foundation:** Insulated basement, R-19 total: poured concrete walls. Interior: 3" R-15 XPS rigid insulation, framed wall with 3.5" R-14.7 blown fiberglass; Exterior: waterproof membrane. Rim joists spray foamed with 3" R-18 closed-cell foam.
- **Windows:** Triple-pane, U-0.14 to U-0.19, SHGC=0.25 to 0.58, R-6.7, thin-film center pane.
- **Air Sealing:** 0.85 ACH50: Whole-house aerosolized acrylic. Spray foamed 3" at rim joists, <2" at raised heels, all top plates, and every light fixture. Canned foam at top and bottom plates, all penetrations, around windows. Taped housewrap and XPS.
- **Ventilation:** ERV, ducted to supply fresh air to bathrooms, kitchen, and open spaces; pulls stale air from bathrooms and kitchen. Set for continuous. Humidistat controlled.
- **HVAC:** Air source heat pump, 9.5 HSPF, 18 SEER. 97.3 AFUE natural gas modulating back-up furnace. Compact duct runs, all in conditioned space.
- **Hot Water:** Gas tankless, 96% EF. Push button recirc pump.
- **Lighting and Appliances:** LED lights, ENERGY STAR appliances.
- **Solar:** None.
- **Energy Management System:** None.
- **Other:** Passive House design. EV-ready outlets.

