



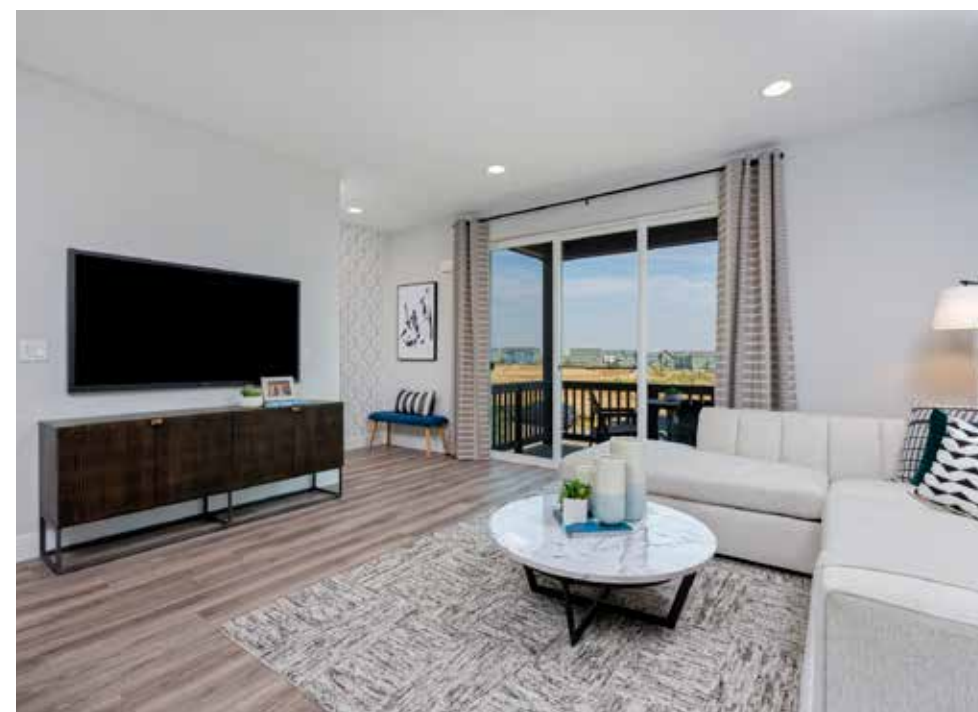
Thrive Home Builders

The E-PWR Volt Townhome at Loretto Heights | Denver, CO | thrivehomebuilders.com



Photos courtesy of Thrive Home

“We love being in a house that is environmentally conscious with a ton of smart home capabilities.” Homeowner



PROJECT DATA

- **Layout:** 2 bdrm, 4 bath, 3 fl, 1,669 ft²
- **Climate:** IECC 5B, cold
- **Completed:** April 2022
- **Category:** Production

MODELED PERFORMANCE DATA

- **ERI:** without PV 41; with PV -1
- **Annual Energy Costs:** without PV \$1,100; with PV \$0
- **Annual Energy Cost Savings:** (versus typical new homes) without PV \$2,150; with PV \$3,200
- **Annual Energy Savings:** without PV 10,050 kWh; with PV 17,600 kWh
- **Savings in the First 30 Years:** without PV \$89,600; with PV \$134,850

CONTACT

Bill Rectanus
303-707-4400, brectanus@thrivehomebuilders.com

KEY FEATURES

- **Walls:** 2x6 16" o.c., advanced framed, R-23 total: 5.5" R-23 blown fiberglass, ½" OSB, draining house wrap, composite wood siding.
- **Roof:** Gable truss roof, ¾" OSB, synthetic underlayment, composite shingles.
- **Attic:** Vented attic: 16" R-60 blown-in fiberglass. 14" raised-heel energy trusses.
- **Foundation:** Slab on grade. R-10 slab-edge insulation. R-68 fiberglass in joists over garage.
- **Windows:** Double-pane windows, U=0.25, SHGC=0.3.
- **Air Sealing:** 2.92 ACH50; Bottom plate and electrical boxes foam sealed, top plate gaskets; polypropylene gaskets for exterior wall penetrations; draining house wrap taped; windows taped, whole-house aerosolized acrylic sealant.
- **Ventilation:** Fan-powered supply ventilation balanced to exhaust fans. Humidity sensors. Active radon mitigation system.
- **HVAC:** Central air-source heat pump, 9.5 HSPF, 23 SEER2.
- **Hot Water:** Heat pump water heater, 65-gal, 3.55 UEF. In 9-ft² closet with transfer grill and door undercut and ducted exhaust. Demand recirculation.
- **Lighting and Appliances:** ENERGY STAR appliances.
- **Solar:** 5.2 kW, no battery.
- **Energy Management System:** IAQ and solar power monitoring.
- **Other:** Electric vehicle charger. All-electric, ENERGY STAR NextGen, LEED platinum. Urban infill. Extensive QA and 3rd party testing during construction.

